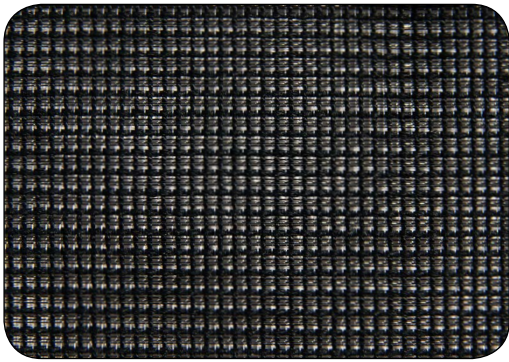
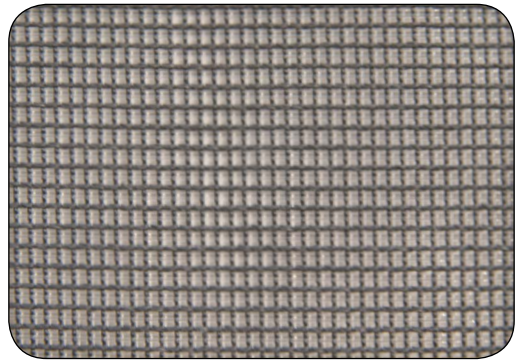




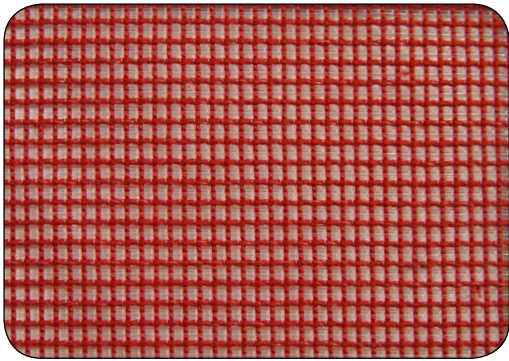
4913 SHRINX



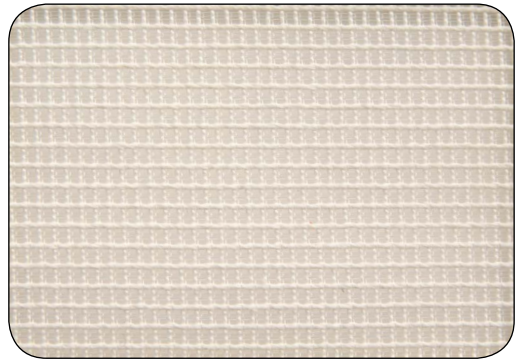
491310 - Black



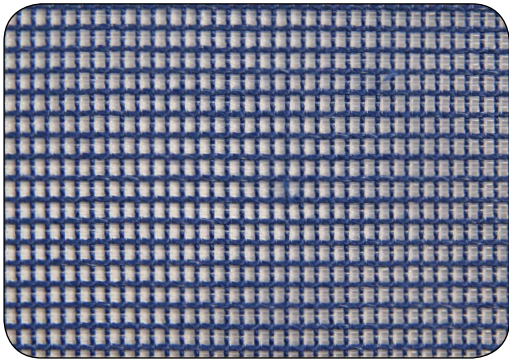
491312 - Grey



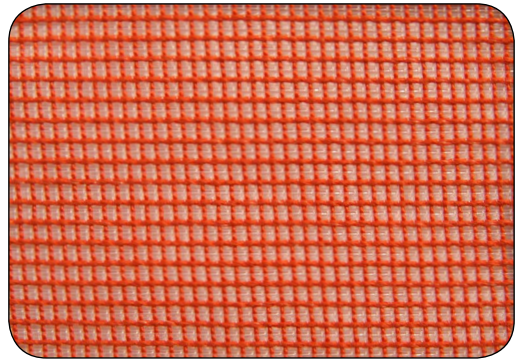
491360 - Red



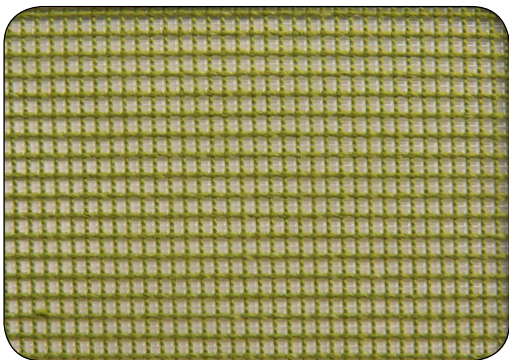
491330 - White



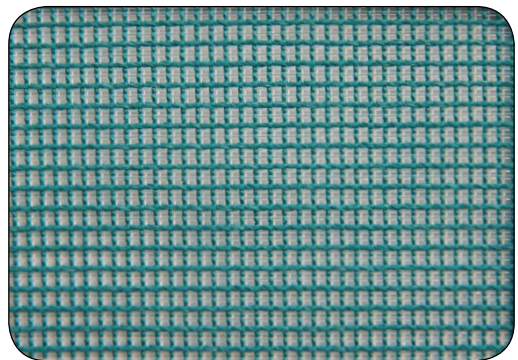
491370 - Blue



491362 - Orange



491390 - Olive Green



491380 - Turquoise

4913 SHRINX



SPECS

Zusammensetzung

99 % Polyester
1 % Elasthan

Breite

120 cm

Gewicht

ca. 215 g/ldm

Brandverhalten

D - DIN EN 1021 :2006 Teil 1
(Zigarettestest) in Kombination mit
Schaumstoff B3 normal brennbar mind,
22 kg/m³ Raumgewicht Klassifizierung
des Brandverhaltens des Polster-
verbundes nach DIN 66084 P-c

Lichtechtheit

DIN EN ISO 105-B02: 2002
5-7

Reibechtheit

DIN EN ISO 105-X12: 2002
4 - 5 trocken und nass

Schweissechtheit

DIN EN ISO 105-E04: 2009
4 - 5 sauer und alkalisch

Reinigungsanleitung

Festverspannte Bezüge: Absaugen

Composition

99 % Polyester
1 % Elasthan

Width

120 cm

Weight

approx. 215 g/lm

Flammability

D - DIN EN 1021:2006 part 1
(cigarette test) when tested with non
flame retardant foam B3 density
22 kg/m³ minimum ignitability
classification of the upholstery
composite according to DIN 66084 P-c

Fastness to light

DIN EN ISO 105-B02: 2002
5-7

Fastness to rubbing

DIN EN ISO 105-X12: 2002
4 - 5 dry and wet

Fastness to perspiration

DIN EN ISO 105-E04: 2009
4 - 5 acid and alkaline

Cleaning

Fixed covers: vacuum cleaning

Composition

99 % Polyester
1 % Elasthan

Largeur

120 cm

Poids

ca. 215 g/ml

Reaction au feu

D - DIN EN 1021 :2006 partie 1
(essai à la cigarette) testé avec mousse
B3 inflammable d'une densité de 22 kg/3
minimum classification de l'inflammabilité
de l'assemblage (simulation de
capitonnement) d'après DIN 66084 P-c

Solidité à la lumière

DIN EN ISO 105-802: 2002
5-7

Solidité au frottement

DIN EN ISO 105-X12: 2002
4 - 5 sec et humide

Solidité a la sueur

DIN EN ISO 105-E04: 2009
4 - 5 acide et alcalin

Nettoyage

Housses fixes: aspirer