

Fabric Trim Options

Xtreme - Made from 100% Recycled Polyester



Tarot YS084



Tobago YS030



Panama YS079



Windjammer YS047



Havana YS009



Forever WK017



Hour WK001



Perpetual WK013

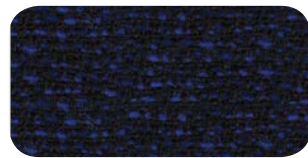
24/7+



Night WK012



Forever WK017



Hour WK001



Perpetual WK013

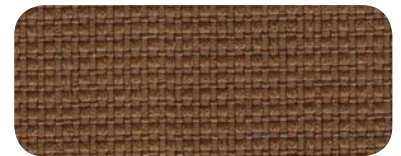
Urban - Made from 100% Recycled Polyester



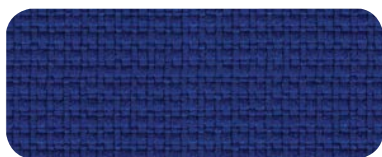
Grafitti YN204



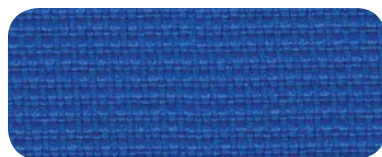
Freeway YN211



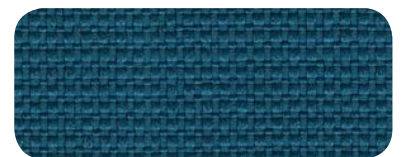
Bench YN091



Conurbation YN082

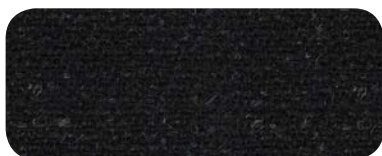


Penthouse YN202



Boulevard YN160

KAB Storm



KAB Storm

Let op: Kleuren kunnen afwijken van de werkelijkheid. • Attention: Actual colors may vary
Achtung: Farben können von den tatsächlichen Farben abweichen • Attention: Les couleurs réelles peuvent varier.

Fabric Trim Options

Xtreme	
Composition	100% Recycled Flame Retardant Polyester
Weight	310g/m2 ±5% (435g/lin.m. ±5%)
Abrasion Resistance	100,000 cycles (800g/12Kpa) Martindale
Flammability	BS EN 1021 - 1 :2006 (cigarette) BS EN 1021 - 2 :2006 (match) BS 7176 : 2007 Low Hazard BS 5852 : 2006 Section 4 Ignition Source 5 BS 7176 : 2007 Medium Hazard <i>Note: Flammability performance is dependant on foam used</i>
Maintenance	Washable to 60°C. Vacuum regularly. Wipe clean with a damp cloth or shampoo using proprietary upholstery shampoo.
Colour Matching	Batch to batch variations in shade may occur within commercial tolerances

Urban	
Composition	100% Recycled Flame Retardant Polyester
Weight	320g/m2 ±5% (450g/lin.m. ±5%)
Abrasion Resistance	100,000 cycles (800g/12Kpa) Martindale
Flammability	BS EN 1021 - 1 :2006 (cigarette) BS EN 1021 - 2 :2006 (match) BS 7176 : 2007 Low Hazard BS 5852 : 2006 Section 4 Ignition Source 5 BS 7176 : 2007 Medium Hazard <i>Note: Flammability performance is dependant on foam used</i>
Maintenance	Washable to 60°C. Vacuum regularly. Wipe clean with a damp cloth or shampoo using proprietary upholstery shampoo.
Colour Matching	Batch to batch variations in shade may occur within commercial tolerances

24/7+	
Composition	50% Polyamide, 33% Virgin Wool 10% Recycled Flame Retardant Viscose 7% Viscose
Weight	435g/m2 ±5% (610g/lin.m. ±5%)
Abrasion Resistance	In excess of 500,000 Martindale cycles with a 10 year guarantee of wearability (full details available)
Flammability	BS EN 1021 - 1 :2006 (cigarette) BS EN 1021 - 2 :2006 (match) BS 7176 : 2007 Low Hazard BS 5852 : 2006 Section 4 Ignition Source 5 BS 7176 : 2007 Medium Hazard <i>Note: Flammability performance is dependant on foam used</i>
Maintenance	Vacuum regularly. Professionally clean or wipe clean with a damp cloth.
Colour Matching	Batch to batch variations in shade may occur within commercial tolerances

KAB Storm	
Composition	55% Nylon, 27% Viscose, 18% Wool
Weight	342g/m2 ±5% (460g/lin.m. ±5%)
Width	135cm ± 2% Usable
Abrasion Resistance	200,000 cycles (800g/12Kpa) Martindale
Flammability	FMVSS 302 BS EN 1021 - 1 :2006 (cigarette) BS EN 1021 - 2 :2006 (match) BS 7176 : 2007 Low Hazard <i>Note: Flammability performance is dependant on foam used</i>
Maintenance	Vacuum regularly and wipe clean with a damp cloth. Generally ex-stock. Custom colours available.
Colour Matching	Batch to batch variations in shade may occur within commercial tolerances



Xtreme and Urban are EU accredited fabrics made from 100% recycled polyester savings virgin raw materials, reducing waste to landfill and minimising our damage to the environment. Life Cycle Assessment has confirmed significant environmental improvements of recycled polyester compared to virgin polyester.

Made using sustainable manufacturing techniques, including green electricity, comprehensive energy and effluent management, these fabrics leave a lighter environmental footprint.